



# Worktops & Splashbacks

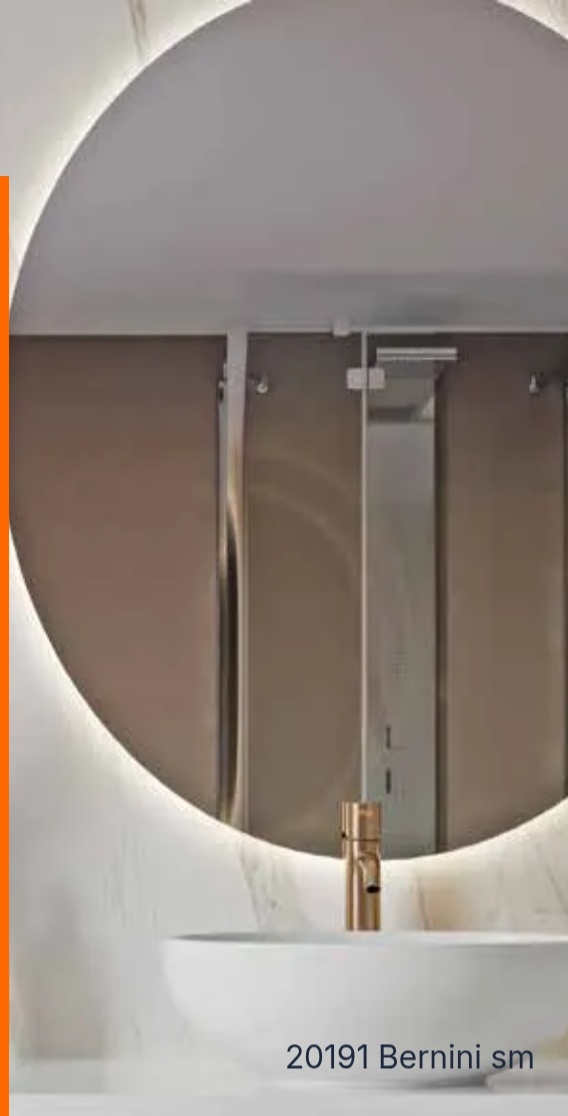
**OMMA**  
MONTERING



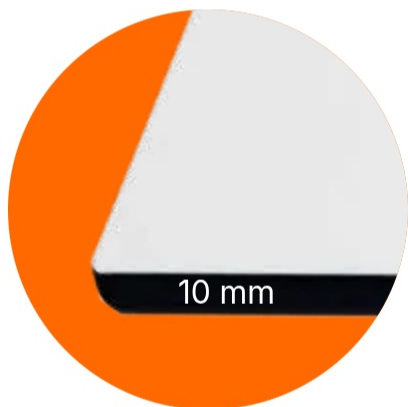
## 10 MM COMPACT LAMINATE WORKTOPS

Blank sizes 10 mm depending on color:

- 3050 \* 1300 \* 10 mm
- 3660 \* 1400 \* 10 mm
- 4200 \* 1850 \* 10 mm
- The thickness of the worktops is 10 mm and they can also be used as splashback panels.
- White or black core depending on the worktop color.
- Worktops and splashback panels are available as blanks or cut to custom dimensions.
- Available only with a straight edge profile.
- Compact laminate is a durable and strong worktop material that, due to its moisture resistance, is also suitable for wet areas.



20191 Bernini sm



10 mm



**2212 Bianco sm**  
3660\*1400\*10 mm  
Core: white



**20151 Nuvola 01 sm**  
3660\*1400\*10 mm  
Core: white



**20191 Bernini sm**  
3660\*1400\*10 mm  
Core: white



**1049 Black lava stone**  
3050\*1300\*10 mm  
Core: black



**0001 White**  
4200\*1850\*10 mm  
Core: black



0720 FENIX Black

**FENIX NTM SUPER MATTE NANO LAMINATE (NANO TECHNOLOGY MATERIAL)**



Extremely  
matte surface



Pleasant to  
the touch



Anti-  
fingerprint



Easy to clean



Resistance to  
scratches  
and abrasion



Impact  
resistant



Resistance to  
chemicals  
and heat



Antistatic



Water-  
repellent



Antibacterial  
and hygienic



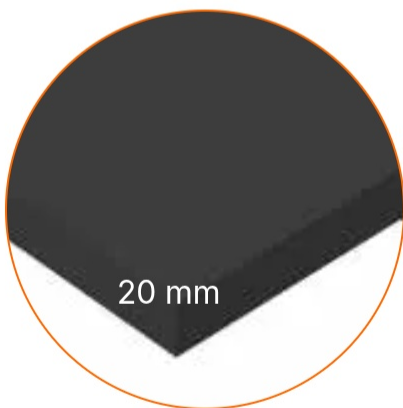
Thermal heal-  
ing of micro-  
scratches

## 20 mm Fenix NTM super matte nano laminate worktops

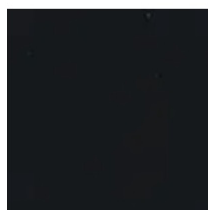
Blank sizes 20 mm:

- 4200 \* 600 \* 20 mm
- 4200 \* 900 \* 20 mm bar worktop
- Fenix worktops are available only with a straight edge profile as blanks or cut to custom dimensions
- The front edge of the worktop blanks is edged with a 1 mm thick ABS edge band matching the surface color
- Worktop blanks are coated with surface/backing laminate

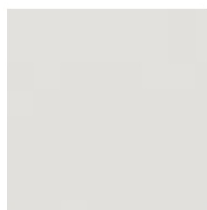
0725 FENIX Grey



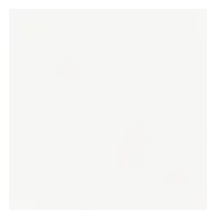
0718 FENIX Grey



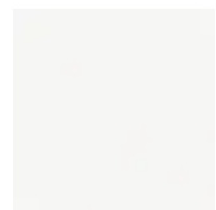
0720 FENIX Black



0725 FENIX Light grey



0030 FENIX Snow white



0032 FENIX White

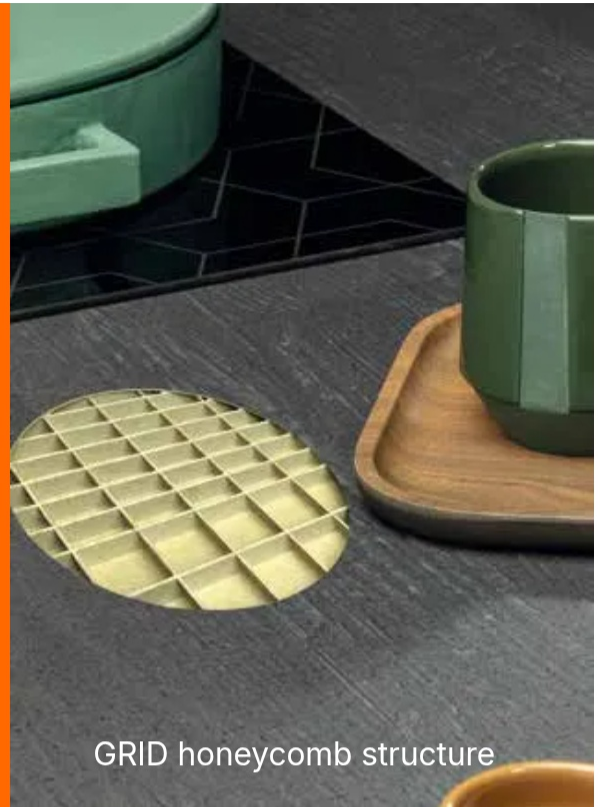
## Greengridz green features

- ✓ Environmentally friendly
- ✓ 100% recyclable
- ✓ Lightweight 6 kg / m<sup>2</sup>
- ✓ Worktops have Carb2 and FSC certification

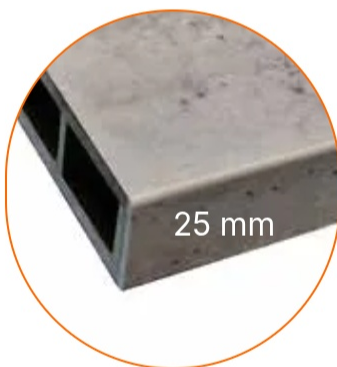
## 25 mm Greengridz honey-comb laminate worktops

Blank sizes 25 mm

- 4100 \* 600 \* 25 mm
- 4100 \* 1200 \* 25 mm bar worktop
- Greengridz worktops are available only with a straight edge profile as blanks or cut to custom dimensions
- All sides of the full-size board are without edge banding
- ABS edge bands 2.0 \* 28 mm in worktop colors



GRID honeycomb structure



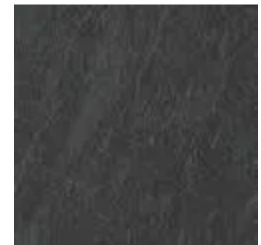
25 mm



GG S60005VO Light concrete



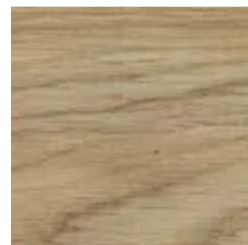
GG DE2620 Sand



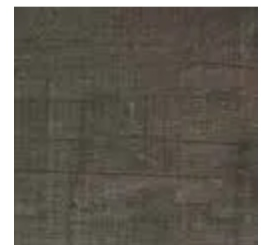
GG DE2390 Dark concrete



GG DE5901 Ash



GG DE5902 Oak



GG DE5977 Dark rustic pine

A durable Greengridz worktop looks like a standard worktop, but the internal structure reveals its strength.

The Greengridz worktop has a lightweight structure consisting of the patented GRID system.

Thanks to the patented GRID system, fewer raw materials are required.

The worktop has the same stability and load-bearing capacity as other worktops.

The Greengridz panel is fully biodegradable.

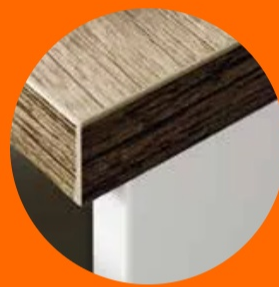
## 30 mm laminate worktops

Blank sizes 30 mm depending on color:

- 4200 \* 600 \* 30 mm
- 4200 \* 900 \* 30 mm bar worktop
- 3600 \* 600 \* 30 mm
- The edge profile of the laminate worktops, depending on the color, is either a straight edge or a postformed edge R5
- Worktops are available as blanks or cut to custom dimensions



R=5 mm Postformed edge 30 mm



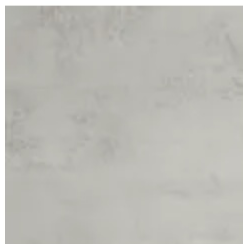
Straight edge 30 mm



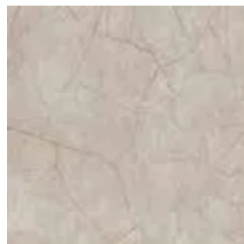
### 30 MM STRAIGHT EDGE LAMINATE WORKTOPS

Blank sizes 30 mm straight edge:

- 3600 \* 600 \* 30 mm
- 3600 \* 900 \* 30 mm



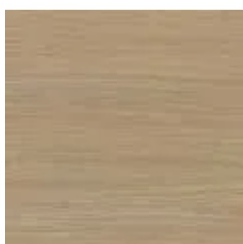
11143 Beton Cire



11561 Porcelain 01 Gold



12043 Bernini



12048 Velazquez 02



EP-140-SM Marmol Versilia

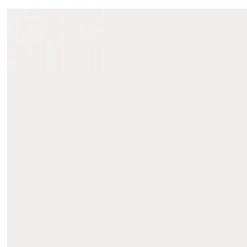


EP-167-AR Velazquez 01

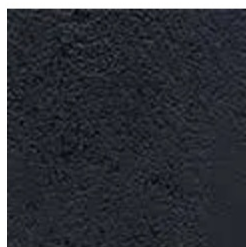


**Blank sizes 30 mm straight edge:**

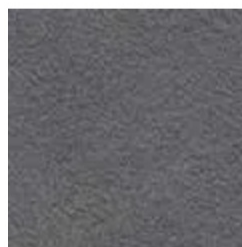
- 4200 \* 600 \* 30 mm
- 4200 \* 900 \* 30 mm bar worktop



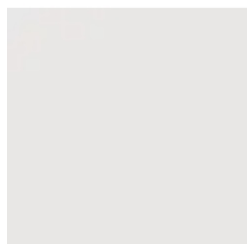
0028 LUCIDA White gloss



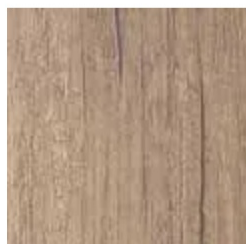
1049 MOON Black lava stone



5111 Dark concrete



A242 C White



EIV341 L Rustic oak



TN9004 Elm

## 30 MM POSTFORMED EDGE R5 LAMINATE WORKTOPS

Blank sizes 30 mm R5:

- 4200 \* 600 \* 30 mm
- 4200 \* 900 \* 30 mm bar worktop



0211 ERRE Light grey



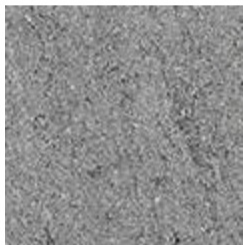
0623 ERRE Grey



3294 LUNA Copper



3331 LUNA Light concrete



3340 MIKA Grey lava stone



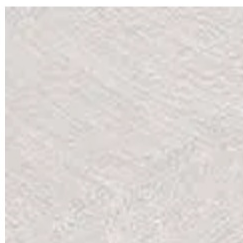
3342 LUNA Light grey lava stone



3395 URBAN Light cement



3396 URBAN Sand cement



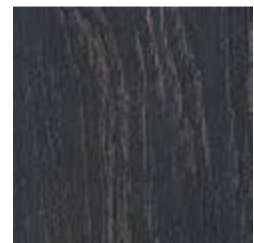
3398 URBAN Grey cement



3493 KER White marble



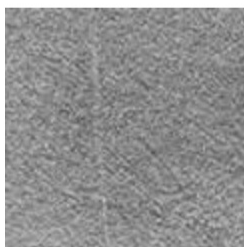
4490 FLATTING Silver pine



4512 ALEVE Dark oak



509 FLATTING Black flatting



5099 Concrete



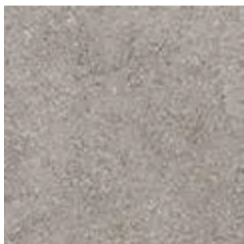
4512 ALEVE Dark oak

**Blank sizes 30 mm R5:**

- 4200 \* 600 \* 30 mm



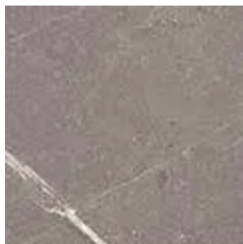
3305 LUNA Brown slate



3324 MIKA Grey stone



3369 LUNA Grey pine



3445 KER Lava marble

**Blank sizes 30 mm R5:**

- 4200 \* 900 \* 30 mm bar worktop



1049 MOON Black lava stone

# Splashback panels

## Materials:

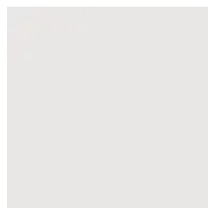
- particle board
- compact laminate
- Alucomp panel
- Depending on the color, splashback panels are either 1- or 2-sided (surface/surface)
- Splashback panels available as blanks or cut to custom dimensions



3493 KER White marble

## Splashback panels compact laminate:

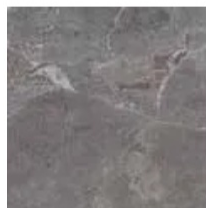
- 4100 \* 645 \* 4 mm
- 2-sided panel (surface/surface)



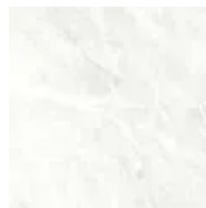
A242 C White



RS431 Dark grey sand



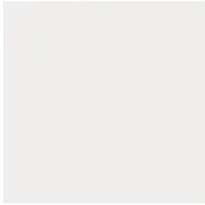
SL120 Grey marble



SL225 Light marble

**Splashback panels compact laminate:**

- **4200 \* 645 \* 4 mm**
- **2-sided panel (surface/surface)**



0028 LUCIDA White  
gloss



1049 MOON Black  
lava stone

**Splashback panels compact laminate:**

- **4200 \* 645 \* 4 mm**
- **1-sided panel**



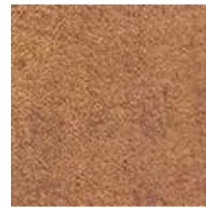
0211 ERRE Light grey



0623 ERRE Grey



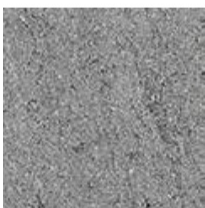
3279 LUNA Dark  
concrete



3294 LUNA Copper



3305 LUNA Brown  
slate



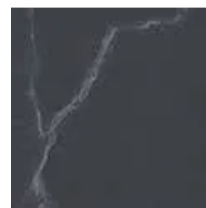
3340 MIKA Grey lava  
stone



3342 LUNA Light  
grey lava stone



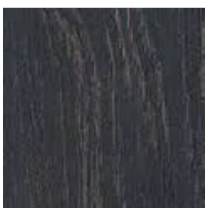
3369 LUNA Grey  
pine



3452 KER Black  
marble



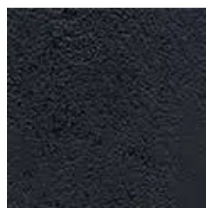
4490 FLATTING  
Silver pine



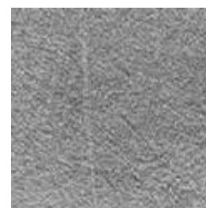
4512 ALEVE Dark oak



4529 ALEVE Elm



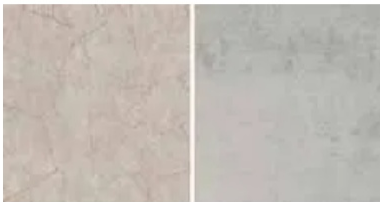
509 FLATTING Black  
flattening



5099 Concrete

**Splashback panels particle board:**

- 3600 \* 600 \* 9 mm
- 2-sided panel (surface/surface)



11561 Porcelain 01 Gold  
11143 Beton Cire



12048 Velazquez 02  
12043 Bernini



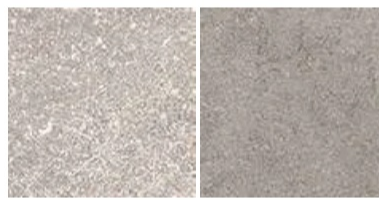
EP-140-SM Marmol Versilla  
EP-167-AR Velazquez 01

**Splashback panels particle board:**

- 4200 \* 640 \* 9 mm
- 2-sided panel (surface/surface)



3331 LUNA Light concrete  
3445 KER Lava marble



3347 LUNA Light plaster  
3324 MIKA Grey stone



3398 URBAN Grey cement  
3395 URBAN Light cement



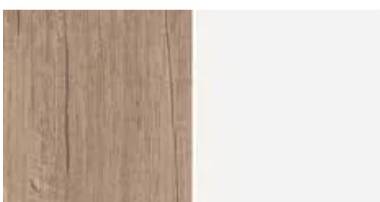
3482 Brown marble  
3487 Dark stone marble



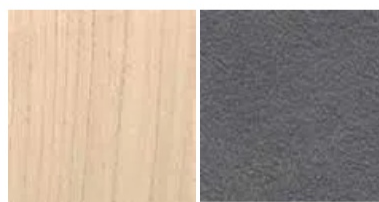
3489 Light stone  
3520 Mist marble



3493 KER White marble  
0211 ERRE Light grey



EIV341 Rustic oak  
A242 White



TN9004 Elm  
5111 Dark concrete



Alucomp White gloss

### Alucomp panels

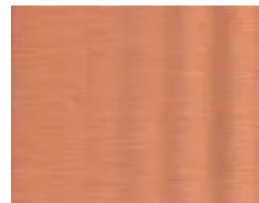
- 3500 \* 608 \* 4 mm
- 2-sided panel



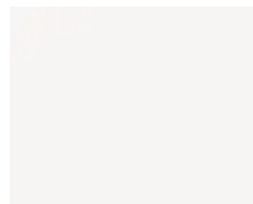
Alucomp Anthracite / Champagne



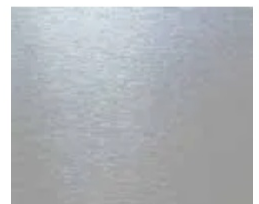
Alucomp White matte / Copper



Alucomp Black / Gold



Alucomp White gloss / Stainless steel



Alucomp Grey matte / Wave



### COMPACT LAMINATE PANELS

The thickness of the worktops is 10 mm and they can also be used as splashback panels.  
You can find the options in our selection on pages 2-3.

# Connecting fittings for worktops and splashback panels



## Worktop connecting profiles



### CONNECTING PROFILE ALUMINUM R5/30

Code 3791MS12867R5ALUM NIK 1466

### CONNECTING PROFILE ALUMINUM R0/30

Code 3791MS12867R0ALUM NIK 1466

- Only suitable for 25 mm Greengridz worktops



### WORKTOP CONNECTING PROFILE GG25

Code BKOPLATGG25 NIK 1466

## End profiles



### END PROFILE ALUMINUM R5/30

Code 3791MS22867R5ALUM NIK 1466

### END PROFILE ALUMINUM R0/30

Code 3791MS22867R0ALUM NIK 1466

## Worktop connectors



- Packaging: 2 pairs/bag

### WORKTOP CONNECTOR

Code 352TASOLIITOS NIK 1466



- Only suitable for 25 mm Greengridz worktops
- Packaging: 1 set

### WORKTOP CONNECTOR GG25

Code BKOPGG25 NIK 1466



- For 25 mm Greengridz worktops
- Color: white

### TAP HOLE SUPPORT SLEEVE GG25

Code BKRGBUSGG25 NIK 1466



### End profiles for Alucomp panels

- Profile length 3500 mm



#### **ALUMINUM L-PROFILE WHITE**

Code 352APL9003 Nik 1454

- Profile length 3000 mm



#### **ALUMINUM L-PROFILE**

Code 352LPROF Nik 1454

- Profile length 3500 mm



#### **ALUMINUM L-PROFILE BLACK**

Code 352APL9004 Nik 1454

### Corner profiles for Alucomp panels

- Profile length 3500 mm



#### **ALUMINUM CORNER PROFILE WHITE**

Code 352APC9003 Nik 1454

- Profile length 3000 mm



#### **ALUMINUM CORNER PROFILE**

Code 352KULMAPROF Nik 1454

- Profile length 3500 mm



#### **ALUMINUM CORNER PROFILE BLACK**

Code 352APC9004 Nik 1454



0032 FENIX White

# Solid wood worktops

Blank sizes 30 mm:

- 3500 \* 620 \* 30 mm
- Worktops available as blanks or cut to custom dimensions



Oak A/B

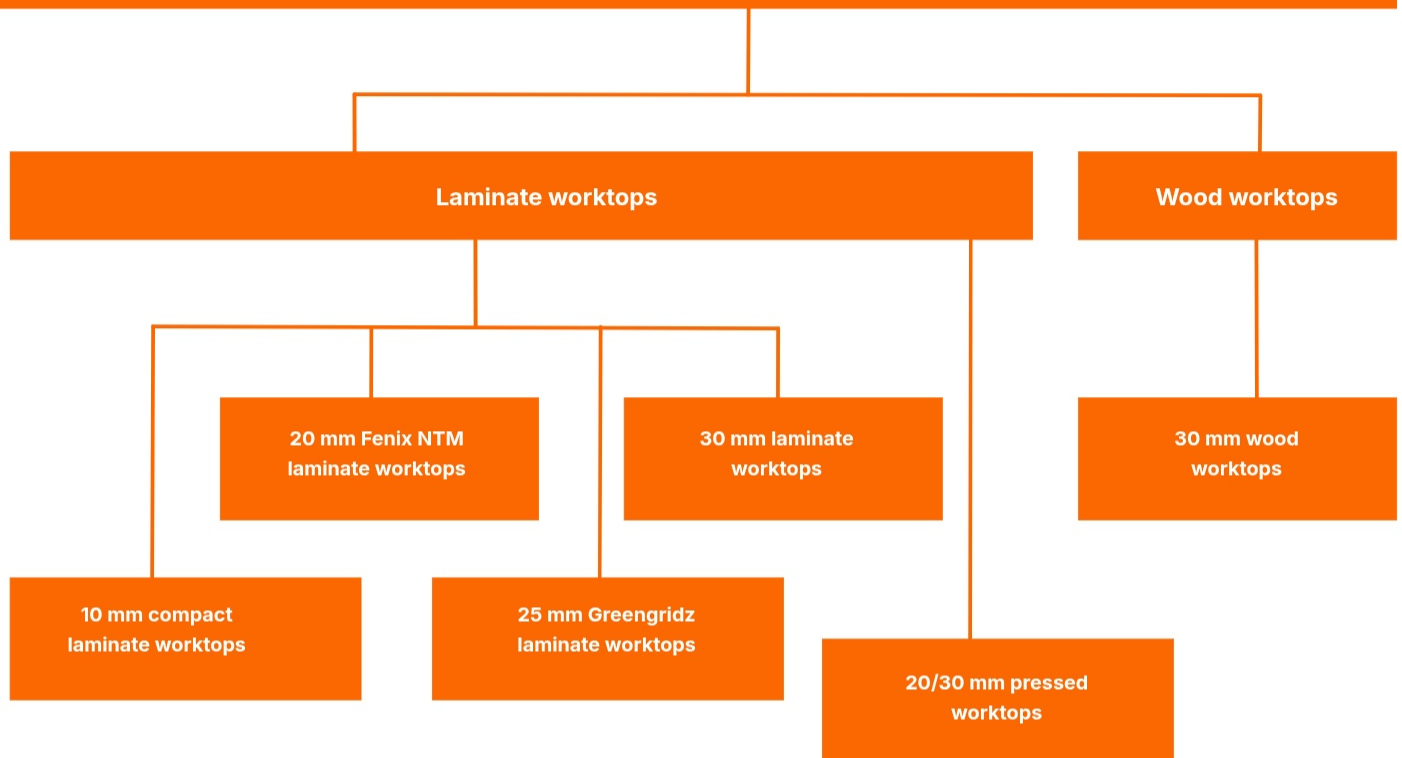


Walnut A/B



# Custom dimension worktops

## CUSTOMIZED WORKTOPS



### CUSTOMIZATIONS FOR LAMINATE WORKTOPS

- cutting and edge banding
  - glued with polyurethane adhesive
- corner worktop spacer
- narrowing the worktop
- rounding a corner
- beveling a corner
- joint machining
- cutout for sink or hob
  - incl. connecting fittings and 2 biscuits
- extension joint
- flush-mounted sink installation
  - incl. connecting fittings and 2 biscuits
- corner hob unit
- corner worktop
- corner worktop spacer
- corner top
- internal corner rounding
- radiator air vent
- air holes
- stone slab inlay
- cutout for sink or hob
- round worktop,  $\varnothing > 610$  mm
- flush-mounted sink installation
- notch
- undermount sink installation

## Custom dimension compact laminate worktops

Max. machining sizes for blanks depending on color:

- 3040 \* 1290 \* 10 mm
- 3650 \* 1390 \* 10 mm
- 3650 \* 1840 \* 10 mm
- The thickness of the worktops is 10 mm and they can also be used as splashback panels.
- White or black core depending on the worktop color.
- Worktops and splashback panels are available only with a straight edge profile.
- Compact laminate is a durable and strong worktop material that, due to its moisture resistance, is also suitable for wet areas.



20191 Bernini sm



**2212 Bianco sm**  
Max: 3650\*1390\*10 mm  
Core: white



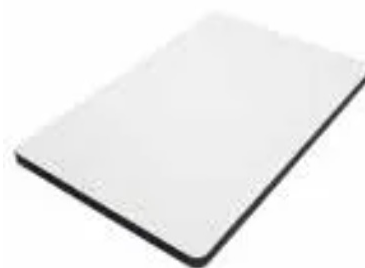
**20151 Nuvola 01 sm**  
Max: 3650\*1390\*10 mm  
Core: white



**20191 Bernini sm**  
Max: 3650\*1390\*10 mm  
Core: white



**1049 Black lava stone**  
Max: 3040\*1290\*10 mm  
Core: black



**0001 White**  
Max: 3650\*1840\*10 mm  
Core: black

# Custom dimension Fenix NTM nano laminate worktops

Max. machining sizes for blanks 20 mm:

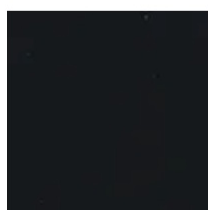
- 4170 \* 600 \* 20 mm
- 4170 \* 900 \* 20 mm bar worktop
- 20 mm Fenix NTM super matte nano laminate (Nano Technology Material)
- Fenix worktops are available only with a straight edge profile
- Worktop blanks are coated with surface/backing laminate



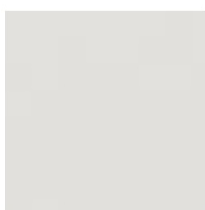
Extremely matte surface	Pleasant to the touch	Anti-fingerprint	Easy to clean	Resistance to scratches and abrasion	Impact resistant	Resistance to chemicals and heat	Antistatic	Water-repellent	Antibacterial and hygienic	Thermal healing of micro-scratches



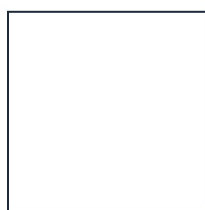
0718 FENIX Grey



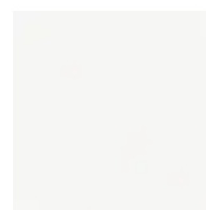
0720 FENIX Black



0725 FENIX Light grey



0030 FENIX Snow white



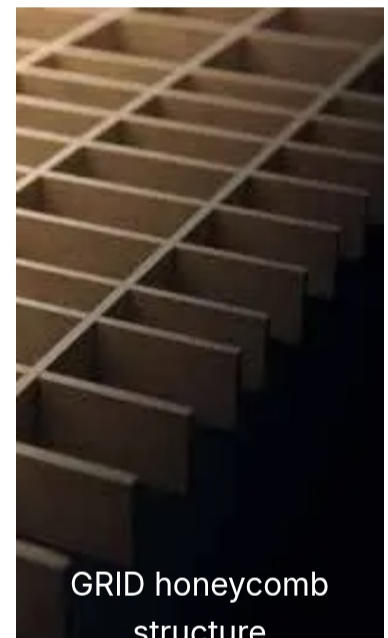
0032 FENIX White



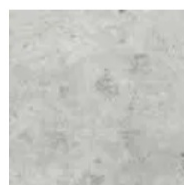
## Custom dimension Greengridz laminate worktops

Max. machining sizes for blanks 25 mm:

- 4100 \* 600 \* 25 mm
- 4100 \* 1200 \* 25 mm bar worktop
- 25 mm Greengridz honeycomb laminate worktops
- Greengridz worktops are available only with a straight edge profile
- ABS edge bands 2.0 \* 28 mm in worktop colors



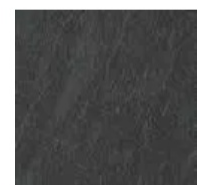
GRID honeycomb  
structure



GG S60005VO  
Light concrete



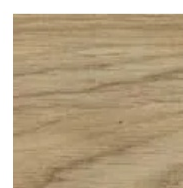
GG DE2620 Sand



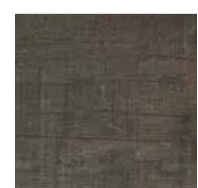
GG DE2390 Dark  
concrete



GG DE5901 Ash



GG DE5902 Oak



GG DE5977 Dark  
rustic pine

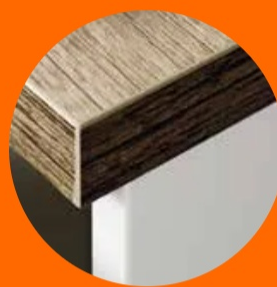
## Custom dimension 30 mm laminate worktops

Max. machining sizes for blanks 30 mm depending on color:

- 4170 \* 600 \* 30 mm
- 4170 \* 900 \* 30 mm bar worktop
- 3600 \* 600 \* 30 mm



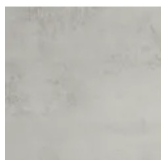
R=5 mm Postformed edge 30 mm



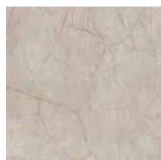
Straight edge 30 mm

Max. machining sizes for blanks 30 mm straight edge:

- 3600 \* 600 \* 30 mm



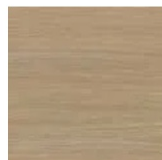
11143 Beton Cire



11561 Porcelain  
01 Gold



12043 Bernini



12048  
Velazquez 02



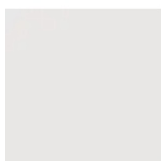
EP-140-SM  
Marmol Versilia



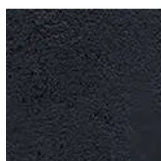
EP-167-AR  
Velazquez 01

Max. machining sizes for blanks 30 mm straight edge:

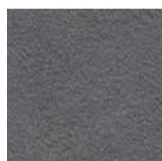
- 4170 \* 900 \* 30 mm bar worktop



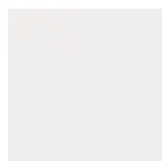
0028 LUCIDA  
White gloss



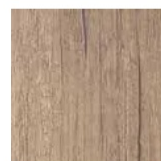
1049 MOON  
Black lava stone



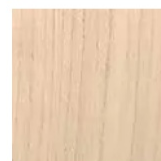
5111 Dark  
concrete



A242 C White



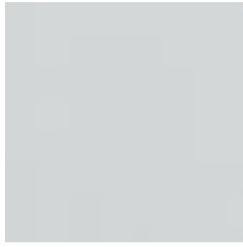
EIV341 L Rustic  
oak



TN9004 Elm

**Max. machining sizes for blanks 30 mm R5:**

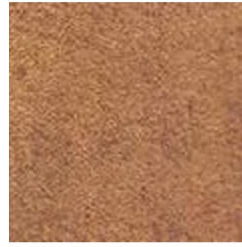
- 4170 \* 600 \* 30 mm
- 4170 \* 900 \* 30 mm bar worktop



0211 ERRE Light grey



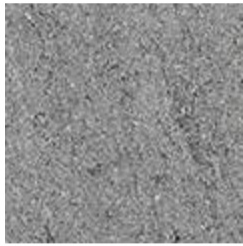
0623 ERRE Grey



3294 LUNA Copper



3331 LUNA Light concrete



3340 MIKA Grey lava stone



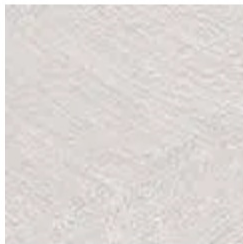
3342 LUNA Light grey lava stone



3395 URBAN Light cement



3396 URBAN Sand cement



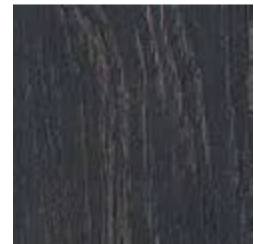
3398 URBAN Grey cement



3493 KER White marble



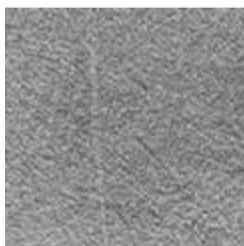
4490 FLATTING Silver pine



4512 ALEVE Dark oak



509 FLATTING Black flatting

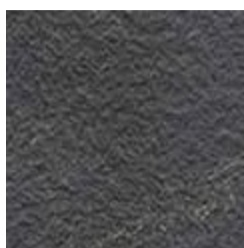


5099 Concrete

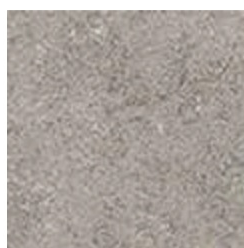
Note! When manufacturing straight edge worktops from postformed edge blanks, the edge banding is applied to the edge opposite the postformed edge (the postformed edge is turned against the wall during installation). The maximum width for bar worktops is 850 mm. 25 mm must be removed from the postformed edge to make the worktop straight-edged.

**Max. machining sizes for blanks 30 mm R5:**

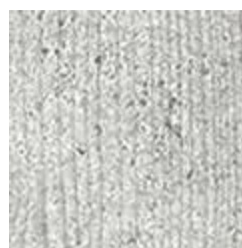
- **4170 \* 600 \* 30 mm**



3305 LUNA Brown slate



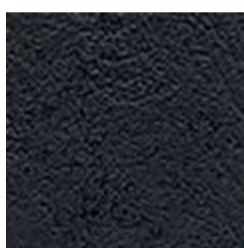
3324 MIKA Grey stone



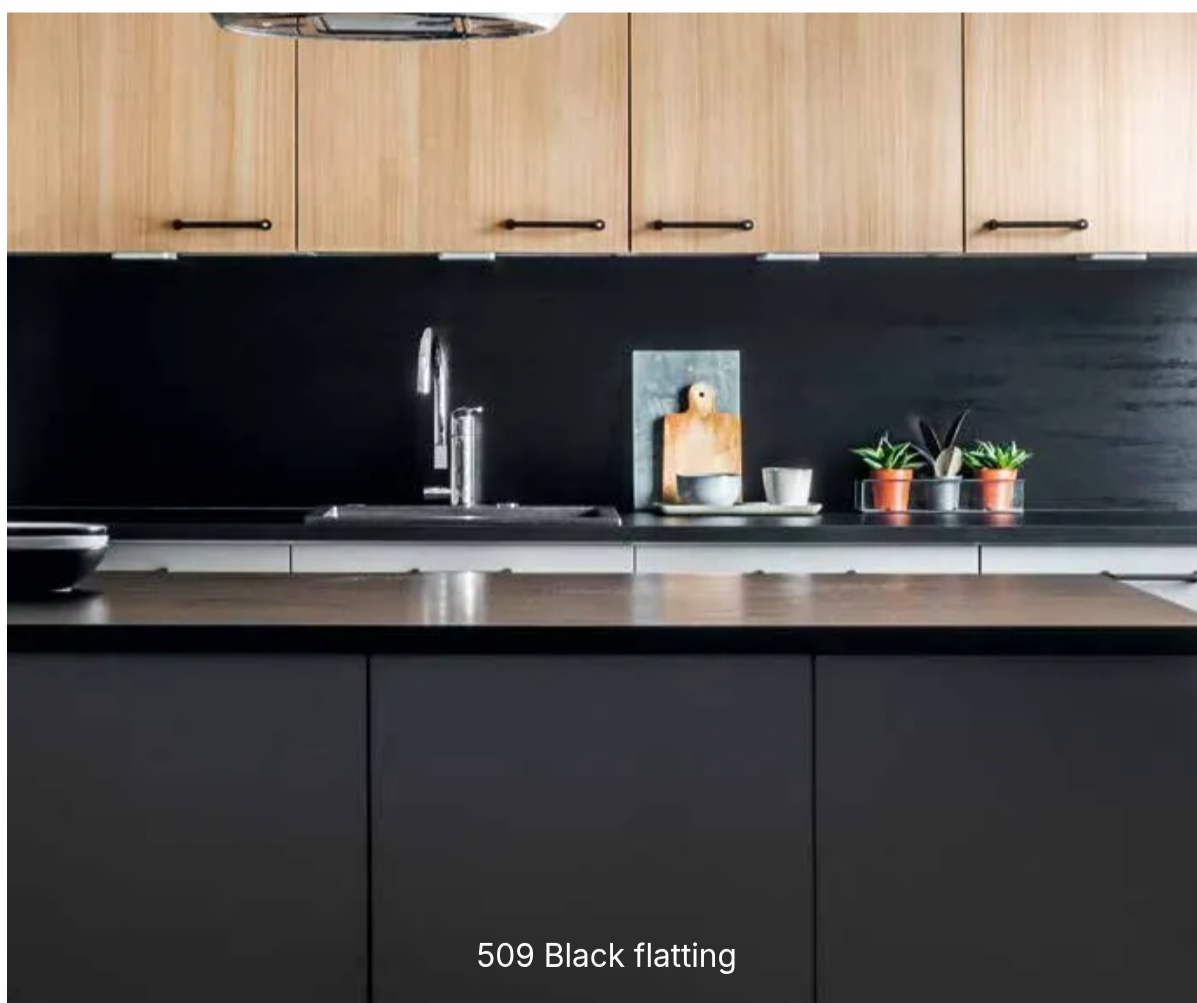
3369 LUNA Grey pine

**Max. machining sizes for blanks 30 mm R5:**

- **4170 \* 900 \* 30 mm bar worktop**



1049 MOON Black lava stone



509 Black flatting

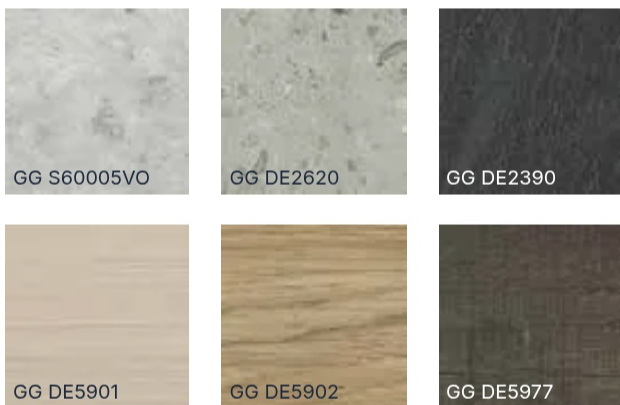
## Pressed laminate worktops

- Colors same as in 20 mm and 30 mm laminate worktops
- Max machining size 4100\*1280 mm
- Worktop thickness 20 mm and 30 mm
- Surface/surface (surface color laminate on both sides of the worktop)
- Surface/backing (surface color laminate on the face side of the worktop)
- Only as straight-edged worktops with ABS edge banding
- Delivery time approx. 10 working days from order



### Loose laminates GREEN GRIDZ 5200\*1300\*0.7 mm:

- Max. machining size 5100\*1200 mm



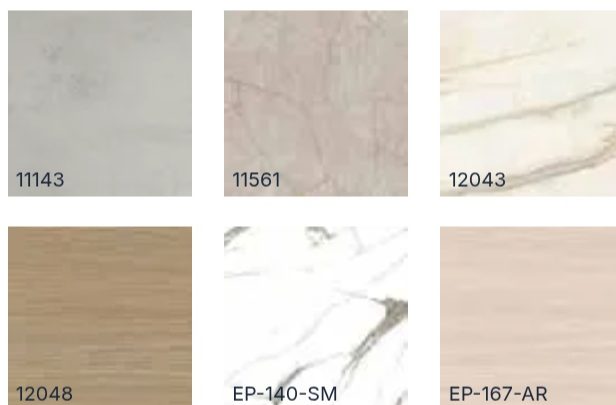
### Loose laminates 4200\*1300\*0.7 mm:

- Max. machining size 4100\*1280 mm
- Colors available only for pressed worktops



### Loose laminates 3600\*1400\*0.4 mm:

- Max. machining size 3500\*1280 mm



### Loose laminates FENIX 4200\*1300\*0.9 mm:

- Max. machining size 4100\*1280 mm

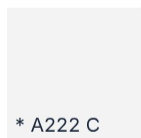




4512 Dark oak

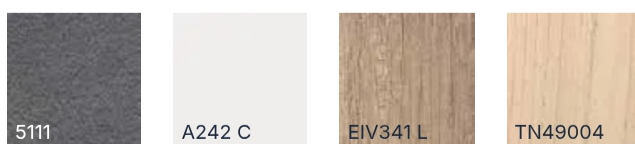
**Loose laminates 4200\*1300\*0.7 mm:**

- Max. machining size 4100\*1280 mm
- \* Max. machining size 4070\*1280 mm



**Loose laminates 4200\*1300\*0.4 mm:**

- Max. machining size 4100\*1280 mm



# Edge bands for straight-edged worktops

## ABS edge bands



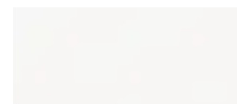
0718 Grey  
1.0 \* 23/33/42 mm



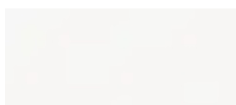
0720 Black  
1.0 \* 23/33/42 mm



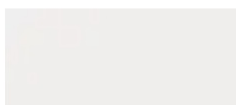
0725 Light grey  
1.0 \* 23/43 mm



0030 Snow white  
1.0 \* 23/33/42 mm



0032 White  
1.0 \* 23 mm



0028 White gloss  
2.0 \* 33/43 mm



0211 Light grey  
2.0 \* 32/42 mm



0623 Grey  
2.0 \* 32/42 mm



1049 Black lava stone  
1.0 \* 32/42 mm



3294 Copper  
2.0 \* 32/42 mm



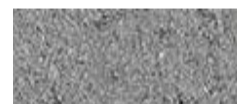
3305 Brown slate  
2.0 \* 32/42 mm



3324 Grey stone  
2.0 \* 32/42 mm



3331 Light concrete  
2.0 \* 32/42 mm



3340 Grey lava stone  
2.0 \* 32/42 mm



3342 Light grey lava stone  
2.0 \* 32/42 mm



3369 Grey pine  
2.0 \* 32/42 mm



3395 Light cement  
2.0 \* 32/42 mm



3396 Sand cement  
2.0 \* 32/42 mm



3398 Grey cement  
2.0 \* 32/42 mm



3482 Brown marble  
2.0 \* 23/33 mm



3487 Dark stone  
2.0 \* 23/33 mm



3489 Light stone  
2.0 \* 23/33 mm



3493 White marble  
1.0 \* 32/42 mm



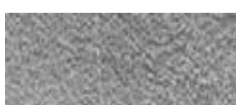
3520 Mist marble  
2.0 \* 23/33 mm



4490 Silver pine  
2.0 \* 32/42 mm



4512 Dark oak  
2.0 \* 32/42 mm



5099 Concrete  
2.0 \* 42 mm



5111 Dark concrete  
1.0 \* 33 mm



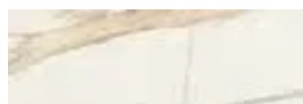
509 Black flatting  
2.0 \* 32/43 mm



11143 Beton Cire  
1.0 \* 31 mm



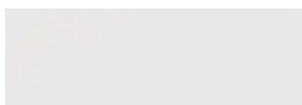
11561 Porcelain 01 Gold  
1.0 \* 32 mm



12043 Bernini sm  
1.0 \* 32 mm



12048 Velazquez 02  
1.0 \* 32 mm



A242 White  
2.0 \* 33 mm



EIV341 Rustic oak  
2.0 \* 32/42 mm



EP-140-SM Marmol Versilia  
1.0 \* 33 mm



EP-167-AR Velazquez 01  
1.0 \* 33 mm



GG S60005VO Light concrete  
2.0 \* 28 mm



GG DE2620 Sand  
2.0 \* 28 mm



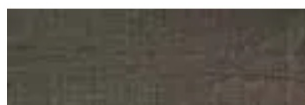
GG DE2390 Dark concrete  
2.0 \* 28 mm



GG DE5901 Ash  
2.0 \* 28 mm



GG DE5902  
2.0 \* 28 mm



GG DE5977 Dark rustic pine  
2.0 \* 28 mm



TN9004 Elm  
1.0 \* 33 mm

**Aluminum / acrylic bands**



Wave band 03  
1.0 \* 32/43 mm



Stripe band 02  
1.0 \* 22/32/43 mm

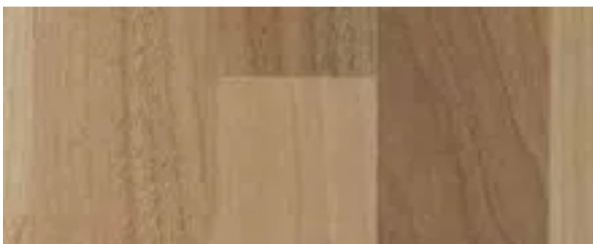
# Custom dimension solid wood worktops

## Solid wood worktops 30 mm:

- Max. machining size 3470\*620\*30 mm



Oak A/B



Walnut A/B

## WOOD WORKTOP MACHINING

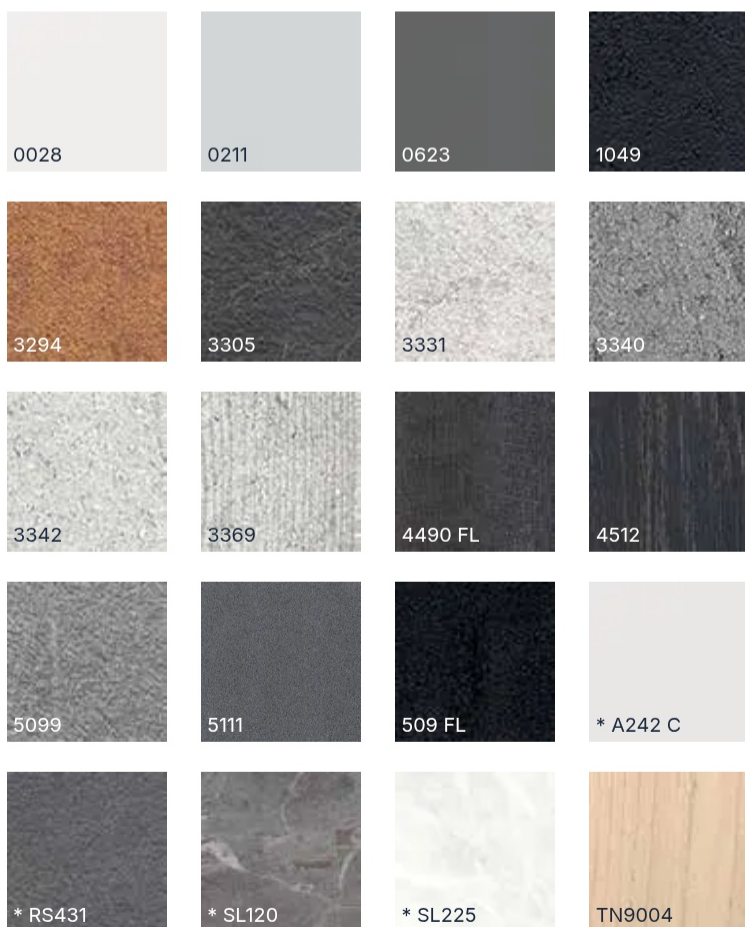
- cutting
- narrowing the worktop
- rounding a corner
- beveling a corner
- joint machining
  - incl. connecting fittings and biscuits
- extension joint
  - incl. connecting fittings and biscuits
- corner hob unit
- corner worktop
- corner worktop spacer
- corner top, pattern matching
- internal corner rounding
- radiator air vent
- air holes
- stone slab inlay
- cutout for sink or hob
- round worktop,  $\varnothing > 610$  mm
- flush-mounted sink installation
- surface treatment oiled
  - top side 2 x and bottom side 1 x
  - mechanical sanding before oiling
  - intermediate sanding by hand
  - oil wax OSMO COLOR TOPOIL

# Custom dimension splashback panels



## Splashback panels 4 mm:

- Max. machining size 4170\*645 mm
- \* Max. machining size 4070\*645 mm



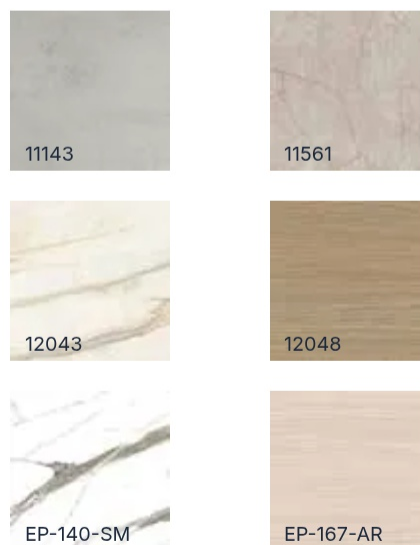
## Splashback panels 9 mm:

- Max. machining size 4170\*640 mm



## Splashback panels 9 mm:

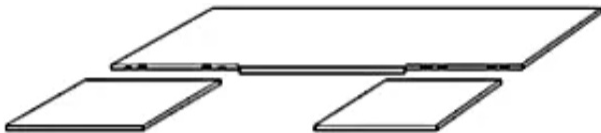
- Max. machining size 3600\*600 mm



# CUSTOM DIMENSION WORKTOP MACHINING

## Corner joint machining

- on laminate worktops, includes connecting fittings and biscuits
- on wood worktops, includes connecting fittings and biscuits



## Corner hob unit



## Corner worktop + spacer

- includes spacer block with mitered ends



## Corner bevel



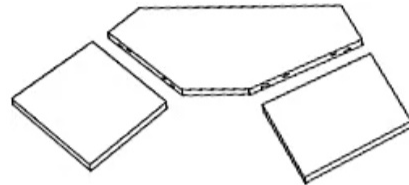
## Extension joint machining

- includes connecting fittings and biscuits



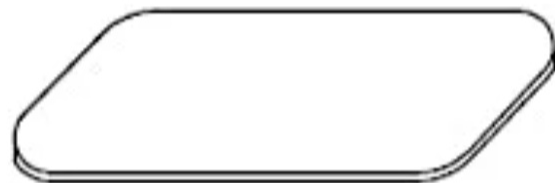
## Corner worktop

- includes connecting fittings and biscuits



## Corner roundings

- R = 75, 100, 150, 200, 260, 300, 400 mm
- R must be specified when ordering

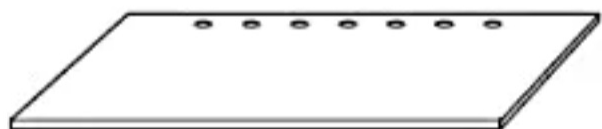


## Narrowing cut

- includes back edge banding with surface laminate



## Radiator holes

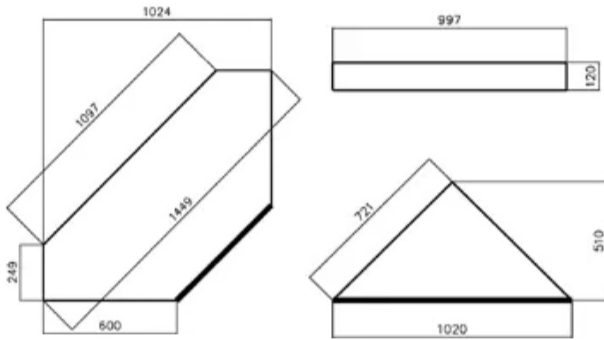


## Flush-mounted sink installation



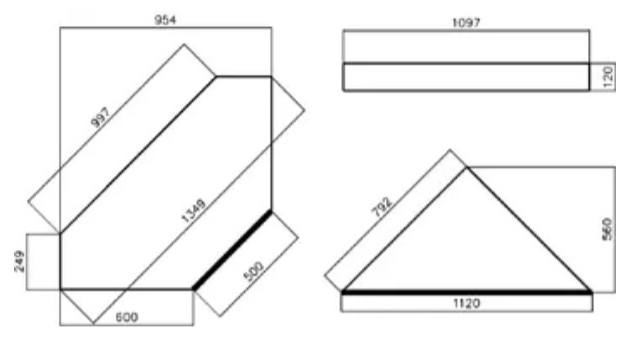
# DIMENSIONS OF HOB UNITS

## Hob unit depth 600 mm



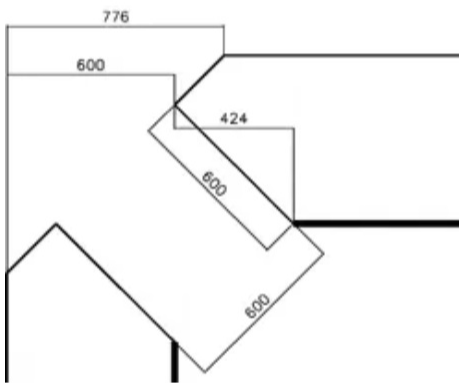
600 hob unit, corner piece and spacer

## Hob unit depth 500 mm



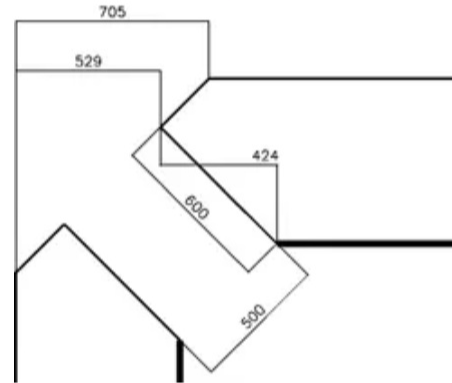
500 hob unit, corner piece and spacer

## Corner hob unit depth 600 mm



600 corner hob units, spacer and corner worktop same as in 600 hob unit

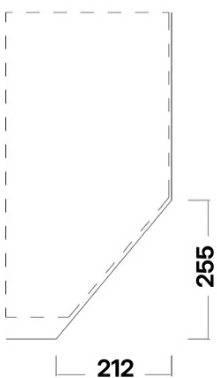
## Corner hob unit depth 500 mm



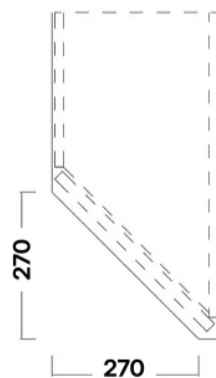
500 corner hob units, spacer and corner worktop same as in 500 hob unit

## Worktop dimensioning for angled end cabinet

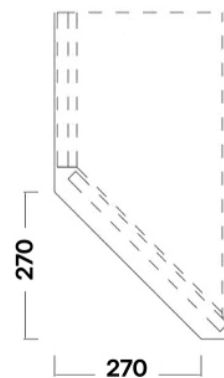
### A03VPHV



### A03VINO without cover panel



### A03VINO with cover panel



## CARE OF SOLID WOOD WORKTOPS

### TOPOIL wax treatment for wood worktops

The brand OSMO COLOR TOPOIL is sold in hardware stores across Finland in 500 ml cans. The basic treatment of custom dimension worktops has been done twice. The third treatment is recommended to be done on-site by the customer after installation. Finally, the product can be polished with a good polishing cloth or similar. It is important to note that during installation or fitting, any exposed wood surfaces on the worktops must also be treated three times with this product. Care must be taken to prevent oil from getting onto the surface of a stainless steel sink!

*Instructions from the manufacturer SARBON WOODWISE OY for wood worktops:*

### GENERAL INFORMATION ABOUT WOOD PANELS AND OILING THEM

Before surface treatment, store the wood panel according to the supplier's instructions. Do not allow it to get wet or damp. Store the panel in a dry place on battens so that it remains straight. Do not handle the panel with dirty hands. Grease, in particular, is difficult to remove without re-sanding the panel.

The surface to be treated must be dry and clean. A suitable sanding grit for oil treatment is 150. Clean the panel of sanding dust or other dust with a dry cloth or by brushing. Wood panels must be oiled on both the top and bottom surfaces to prevent the panel from warping. A warped panel will not return to its original shape. It is especially important to also treat the cross-sectional surfaces of the wood, both at the ends of the panel and at any sink cutouts or other penetrations.

OSMO COLOR TOPOIL is a special oil-wax for the surface treatment of wood worktops and furniture. It is colorless and causes minimal color change in the wood, with few exceptions. The treated surface has a matte finish. It does not crack, flake or peel.

TopOil is a mixture of vegetable oils, vegetable waxes and paraffin for oiling untreated wood worktops and furniture or those cleaned of old paints or varnishes. TopOil creates a surface that is very resistant to abrasion and highly resistant to liquids and common household chemicals. A surface oiled with TopOil according to the instructions is resistant to water, coffee, milk, fruit juices, soft drinks, beer and wine according to DIN standard 68861-1C. Once dry, a surface oiled with TopOil is non-toxic. TopOil is ready to use, do not thin it. Mix the oil-wax mixture by shaking the can. TopOil dries by oxidation. The drying speed is affected by temperature, ventilation, wood species, sanding grit of the wood and the application rate of the product. At room temperature in a well-ventilated area, with the recommended application rates, the surface is dust-dry in 6-8 hours and dry in 12-18 hours. A dry surface can be subjected to light use, but it must not be covered except temporarily with corrugated cardboard. The dried surface will continue to harden for up to 6-12 days, after which it can be polished if desired and is fully ready for use. This must be taken into account especially when manufacturing restaurant furniture and other furniture exposed to heavy wear in public spaces.

### APPLICATION METHOD

Apply TopOil with a good, stiff bristle varnish brush, a foam brush or a clean, lint-free cloth that does not bleed color. Apply the product thinly, first across the grain and immediately afterwards along the grain, without adding more TopOil. The application rate is approximately 0.5 dl/m<sup>2</sup>. Allow the oiled surface to dry in a well-ventilated area for at least 8 hours, or preferably overnight, so that the applied layer is properly dry. Repeat the treatment 3-4 times so that approximately 1 dl of TopOil is used per square meter. Note that the application rate per layer decreases with successive applications. If you want to color the panel, use pigmented Osmo Color Wood Waxes. The colored layer(s) are applied first and the surface is finished with one or more layers of TopOil. There must be an interval of at least 48 hours between the colored and clear applications so that the colored wood wax is properly dry. Otherwise, there is a risk that the color will dissolve during the TopOil treatment.

### SPECIAL NOTES

Heat-treated woods may darken significantly when treated with oil. Therefore, test on a small area first. The darkening of the wood is more pronounced the more intensely the wood has been heat-treated. However, Osmo Color TopOil also provides an exceptionally durable surface for these woods. For some wood species, such as many tropical woods like teak, iroko and wenge, due to their hardness, oiliness and resin content, Osmo Color Wood Wax Extra Thin No. 1101 clear must be used. The working method is the same as when using TopOil, except that after a few minutes, excess oil is wiped off the surface until dry. Surfaces previously treated with other oils, such as paraffin, poppy seed or linseed oil, can be treated with TopOil if the previously applied oil has dried. Surfaces treated with a generous amount of linseed oil must be lightly sanded beforehand.

# CARE OF OSMO COLOR SURFACES

## CARE OF OSMO COLOR SURFACES

Surfaces oiled with Osmo Color products are durable and very well suited for both kitchens and bathrooms. To maintain their properties, oiled surfaces require some attention and care. When you notice that the surface is worn and water no longer beads on the waxed surface in the typical way, apply a thin layer of TopOil. Allow it to dry before subjecting the surface to normal use. You can maintain the condition of the surface and clean stains from it using Osmo Color Liquid Wax Cleaner packed in a spray bottle. A red scouring pad can be used to help remove stains. The surface can be polished with a white scouring pad.

Oil-waxed wood surfaces cannot withstand heat, so hot dishes taken from the stove, oven or microwave require a trivet underneath. Highly alkaline and acidic substances (e.g. strong undiluted detergents, vinegar and strong alcohols), nail polish, nail polish removers and strong solvents (such as acetone and xylene) damage the surface, so wipe them off the oiled surface immediately. Otherwise, wiping with a damp cloth is sufficient for surface care. As a detergent, you can use a mild soap solution, such as those intended for hand-washing dishes, or special products intended for oiled surfaces, such as Osmo Color Wash and Care.

## FENIX NTM™ - CLEANING AND MAINTENANCE

FENIX NTM is a new type of nanotechnological furniture coating that can be cleaned using standard household cleaners.

If dirt does not come off during normal cleaning, the surface should be cleaned with a white melamine sponge, i.e. a magic eraser. The sponge lifts the dirt out of the nano-coating. The magic eraser can also be used dry, but an all-purpose cleaner or a dishwashing liquid solution will enhance the cleaning process.

The best cleaning results are achieved using so-called Quick-method cleaners and a microfiber cloth used in professional cleaning. Proven products include e.g. Kiiolto Superquick Spurt and Ecolab Magic Maxx. Private customers can buy these products from hardware stores or cleaning wholesalers. Spray the cleaner onto the surface to be cleaned and wipe with a microfiber cloth. Alternatively, the cleaner can be sprayed directly onto the cloth. No rinsing is required.

## REPAIRING MINOR SCRATCHES

FENIX NTM is highly resistant to wear. However, if the surface gets scratched, minor scratches can be ironed out to be almost invisible.

FENIX NTM is highly resistant to wear. However, if the surface gets scratched, minor scratches can be ironed out to be almost invisible. The scratch is first cleaned by rubbing with a dry magic eraser. After this, the scratch is covered with a damp paper towel to protect the soleplate of the iron. Finally, the scratch is ironed closed. The suitable temperature for the iron is 2 dots.

## OTHER INFORMATION

### PACKAGING

- worktops individually shrink-wrapped, on pallets
- plastic corner protectors
- worktops are marked with customer number and order reference

### CUSTOMER ORDERS

- always on CC's order forms or via the STELLA online tool
- markings in the necessary sections
- postformed edges must be marked with a triangle symbol
- all dimensions in mm

### DELIVERIES OF CUSTOM DIMENSION WORKTOPS

- standard laminate worktops and solid wood worktops: delivery time 5 working days
- sink installations, solid wood worktops to be oiled and m<sup>2</sup>-priced laminate worktops: delivery time 10 working days

**OMMA**  
**MONTERING**